

A large-scale offshore wind farm is silhouetted against a vibrant sunset sky. The sun is a bright, glowing orb on the horizon, casting a shimmering reflection on the water. The wind turbines are arranged in rows across the sea. A large, dark green curved shape overlaps the top left corner of the image, serving as a background for the text.

Introducing Turley

Expertise in Energy

Turley

Who we are

Trusted independent advisors with restless ambition to shape a more sustainable future.

We work collaboratively with our clients to deliver places and communities that thrive.

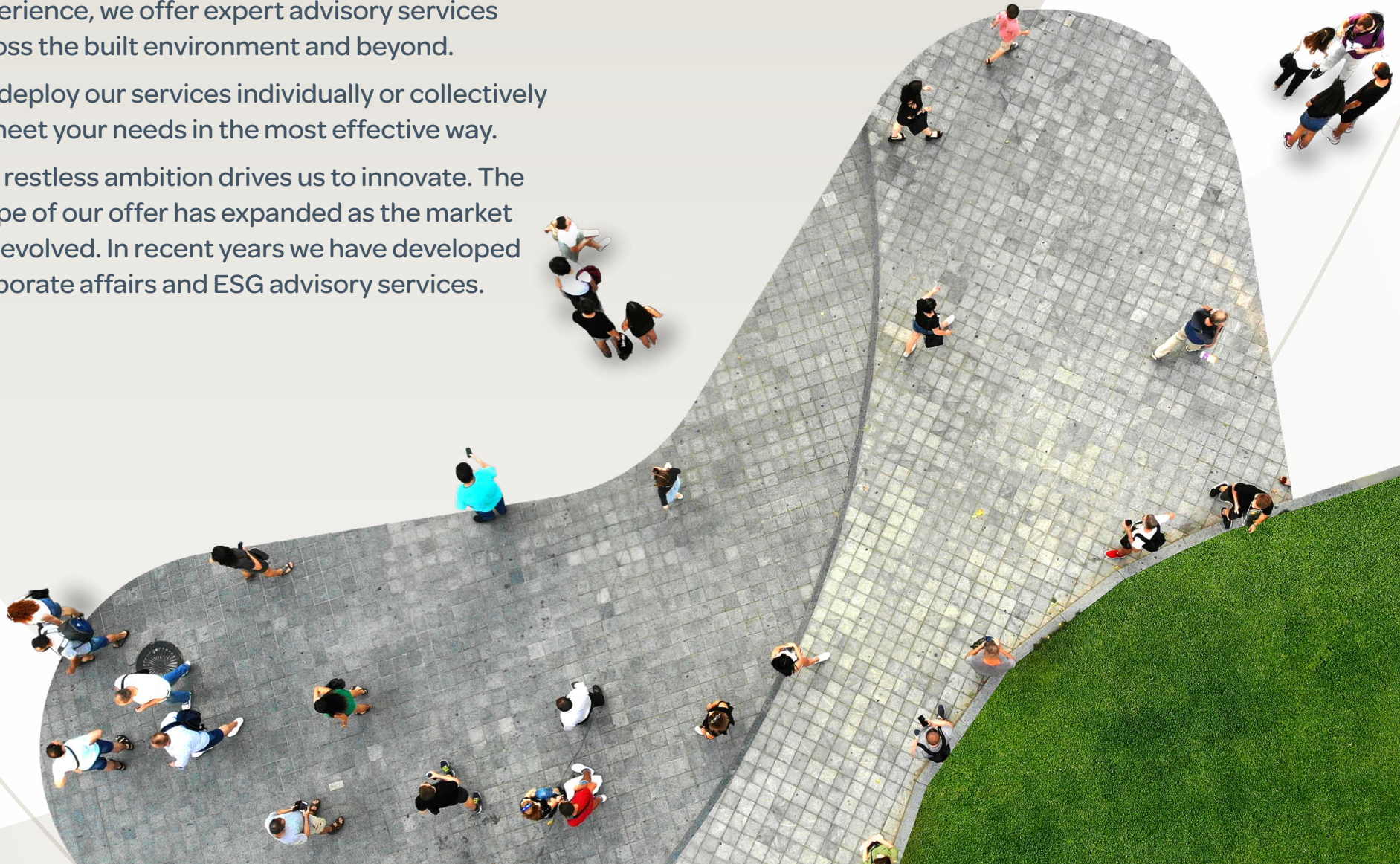


Our offer

Built on over 40 years of planning consultancy experience, we offer expert advisory services across the built environment and beyond.

We deploy our services individually or collectively to meet your needs in the most effective way.

Our restless ambition drives us to innovate. The scope of our offer has expanded as the market has evolved. In recent years we have developed corporate affairs and ESG advisory services.



Locations

We are rooted in the places we work through social and business connections.

Our people invest in positive relationships with local authorities, businesses, communities and co-professionals across the UK and Ireland.

We bring local knowledge and networks.



Our services

We offer expert advisory services for the built environment and beyond.

Combining professional expertise with in-depth market knowledge we work with clients to deliver thriving places and communities across all sectors.

We bring deep thinking; smart strategy; and expert delivery.



Turley in Wales

Our Cardiff office opened in 2010. Built on the successful delivery of the St David's 2 Shopping Centre, our team has delivered a great variety of small, medium and major projects in Wales and England.

We have a strong track record gained through an excellent understanding of the evolving Welsh planning system and valued relationships with our clients.

Turley has invested in the Cardiff market and our team to ensure it is well positioned to meet the growing need to advise on development projects across the principality. Led by Huw Jones and Owen Francis, our experienced team works across a broad range of sectors.

The office has the ability to do business in Welsh and English.



Our energy expertise

As a multi-disciplinary planning and development consultancy we have an extensive track record in securing planning permission for energy infrastructure projects of scale and significance across all regions of the UK and Ireland. We have also advised on Development Consent Orders for Nationally Significant Infrastructure Projects (NSIP) in England and Wales.

Renewable energy projects demand high quality, specialist skills and knowledge to successfully navigate different consultation and consenting regimes. Our UK and Ireland-wide presence enables us to match our expertise and experience to the particular requirements of an individual project.

We are not constrained by geography; we work flexibly to ensure that the best team is always assigned to each project - thereby providing a distinctive proposition in the market place.

Working in the energy infrastructure sector we have advised on proposals across a range of established and emerging technologies including: offshore wind, onshore wind, solar, energy from waste, biofuels and biomass, carbon capture and storage, hydrogen production and district heat networks.

Our projects have included:

- **One of the first onshore wind farms to be promoted as a Nationally Significant Infrastructure Project;**
- **The first bio-ethanol production plant to be consented in the UK;**
- **One of the first floating offshore wind projects in the UK;**
- **One of the first proposed pilot projects for carbon capture and storage at a conventional power station; and**
- **One of the first applications to co-locate a hydrogen production compound with an existing operational wind farm; an EU funded pilot project.**

Across all disciplines we have an established track record in successfully promoting energy infrastructure projects through the various consenting regimes throughout the UK and Ireland.

In Wales, Turley is collaboratively providing consenting and strategic planning advice to Blue Gem Wind (with ITPE) for its proposed 96 MW floating wind demonstrator project off the Pembrokeshire coast. The project will be the first of its kind in Wales, and will pave the way for future commercial floating wind in the UK, Ireland and globally.

Our Planning and Design teams are also supporting Tata Steel Ltd in the implementation of a Development Consent Order, delivering a nationally significant infrastructure energy generation plant at Port Talbot. The energy scheme is a vital investment in the operational efficiency of the steelworks.

A selection of our project experience is provided on the following pages.

How we can help to deliver renewable energy developments

Site identification:

- GIS capabilities
- Introductions to owners / promoters of strategic land
- Review of historic consents / refusals

Site appraisal / risk management:

- Planning policy reviews and advice
- Site Appraisals
- Stakeholder audits
- Pre-application discussions with LPA's and other stakeholders
- Monitoring / review of competing applications and preparation of objections / representations where appropriate

Site promotion:

- Representations to national policy
- Development plan monitoring and representations
- Strategic advice re: consenting strategy to minimise risk and maximise chances of success
- Coordinating planning applications, marine licences and Section 36 applications and other relevant consent applications
- Preparing Development of National Significance (DNS) applications
- Development Consent Order Applications for NSIP projects
- Preparing Common Land Consent Applications (NSIP)
- Expertise in CPO

- Discharging of planning conditions and re-application of marine licences to ensure validity in line with build period
- Planning appeals - including expert witness services for public inquiry
- Reviewing Section 106 and other legal agreements and supporting negotiations with key stakeholders where necessary
- Advising in respect of site restoration bonds and on matters relating to community benefit payments

Technical Support:

- EIA coordination
- LVIA
- Climate change assessments
- Economic impact assessments
- Heritage appraisal/assessments
- Strategic communications



Onshore and offshore wind

Widdrington Wind Farm

Wind Farm Development in a sensitive ecological environment

CLIENT

Peel Energy

LPA

Northumberland County Council

STATUS

Operational

SERVICES

Planning, EIA, Strategic Communications

We secured planning permission for the development of a wind farm of nine turbines (125m to blade tip) and associated infrastructure on the site of a former open cast coal mine in Northumberland.

We were appointed as lead consultant and advised in respect of the planning and community engagement strategy, co-ordinated the preparation of the Environmental Statement and led negotiations with Northumberland County Council and other key stakeholders including the RSPB and Natural England.

Key to the success of the project was the identification of innovative ecological mitigation measures and a package of local economic benefits to be secured through a Section 106 Agreement. An effective community consultation programme neutralised the majority of local opposition and resulted in the scheme being supported at planning committee by a number of individual residents and influential community campaign groups.

Scout Moor Wind Farm extension

Extending a wind farm of national significance

CLIENT

Peel Energy

LPA

Rochdale and Rossendale Borough Council

STATUS

Determined

SERVICES

Planning, EIA, Strategic Communications

We were commissioned to lead planning and strategic communications work in connection with a planning application to extend the wind farm by the construction of 16 additional turbines.

Our Planning team prepared the overarching planning strategy and subsequently co-ordinated the preparation of the planning application, EIA and application for Common Land Consent.

Our Strategic Communications team prepared and delivered a comprehensive consultation strategy in support of the planning application.

The development was originally conceived as one of the first Nationally Significant Infrastructure Projects and progressed to consultation on Preliminary Environmental Information before being scaled back and determined under the Town and Country Planning Act with the support of both Rochdale and Rossendale Borough Council.



Project Erebus

A new offshore wind farm in Pembrokeshire

CLIENT

Blue Gem Wind

LPA

Pembrokeshire Coast National Park and Pembrokeshire County Council (offshore elements under the jurisdiction of Natural Resources Wales)

STATUS

S.36 consent granted

SERVICES

Planning

We have provided strategic planning and consenting advice to BlueGem Wind (a JV between Simply Blue Energy and Total) in relation to its 96MW Erebus demonstration project off the Pembrokeshire coast. Erebus will be the first floating wind farm in the Celtic Sea and, when complete in 2027, will be one of the largest floating wind farms in Europe.

We are also providing (P&C) consenting advice in relation to a number of significant FLOW projects in the Celtic Sea.





Energy recovery

Protos Resource Recovery Park

Creating an energy and innovation hub

CLIENT

Peel Environmental

LPA

Cheshire West and Chester Council

STATUS

Approved

SERVICES

Planning, EIA, Economics, Sustainability and ESG

We have been retained by Peel Environmental to lead the planning application process for a number of individual energy infrastructure projects across the Protos site. We have secured separate planning permissions for a 20MW biomass renewable energy plant, a 49MW energy from waste facility and a Timber Recycling Plant. Our role on each of these applications included preparing the planning strategy, negotiation with Cheshire West Council and other key stakeholders, and co-ordinating a multi-disciplinary team in preparation of the planning applications and EIA.

We also monitored the progress of the applications advising on 'next steps' to address any areas of concern and presented the schemes to the council's planning committee, successfully securing permission on each occasion.

Our role also included discharging all planning conditions to allow the development to be constructed and become operational.

Energy Recovery Facility and Waste Transfer Station, Peterborough

A new energy from waste facility

CLIENT

Viridor Waste Management

LPA

Peterborough Borough Council

STATUS

Complete

SERVICES

Planning, EIA

Our Planning team led the planning process for an application for an Energy Recovery Facility (8.4MW) and Waste Transfer Station, providing strategic advice at the beginning of the project and subsequently managing the entire planning application.

Our role included co-ordination of the planning application and EIA, working alongside a multi-disciplinary team of consultants and the client.

We also led negotiations with the LPA and other stakeholders, successfully securing planning permission. The facility opened in March 2016 and is contributing to Peterborough's aspiration to become the UK's Environment Capital and eventually achieve zero landfill.



Biofuels and biomass



Biorefinery and CHP Plant

New bio-ethanol from grain facility in ecologically sensitive location

CLIENT

Green Spirit

LPA

South Somerset District Council

STATUS

Approved

SERVICES

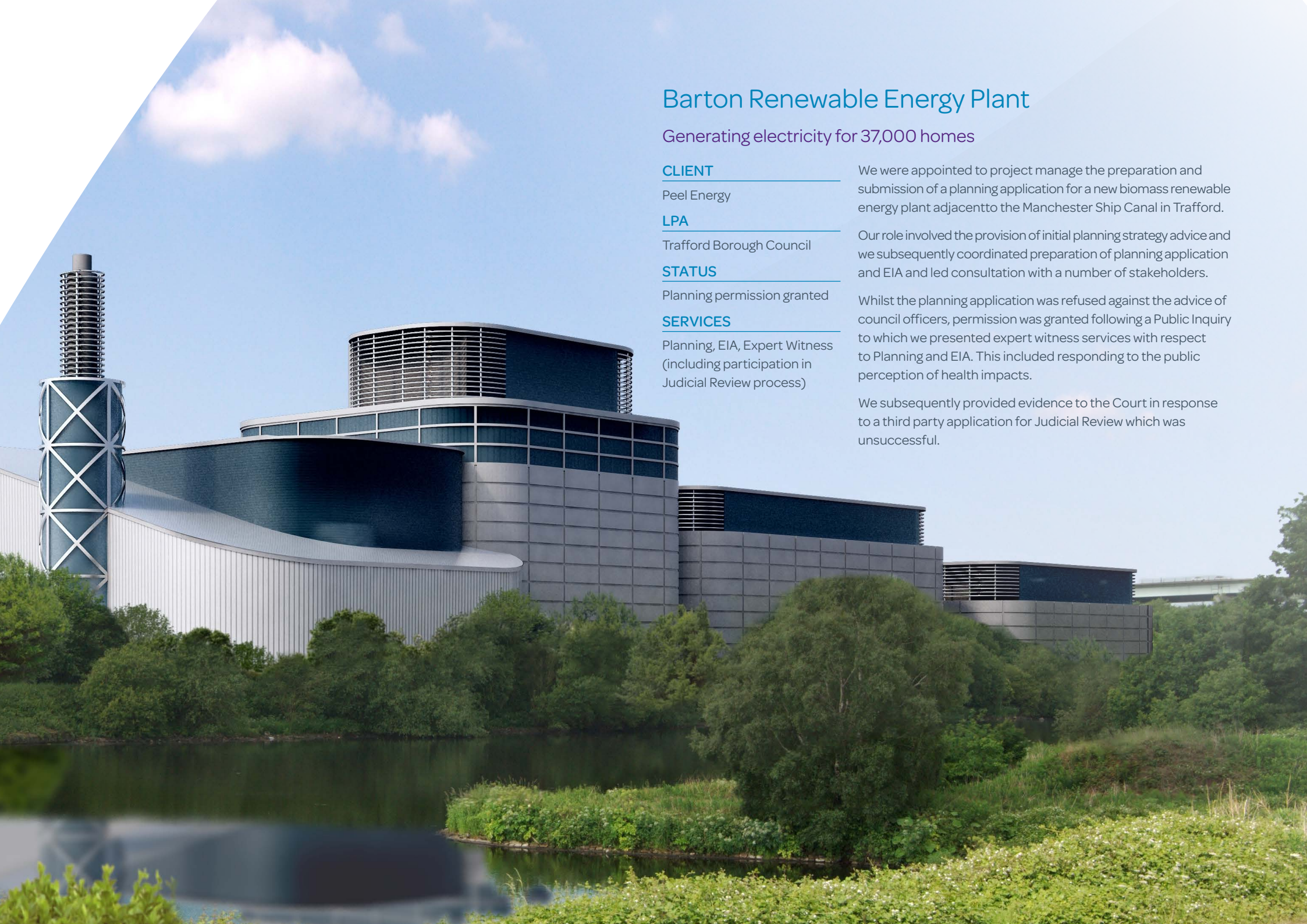
Planning, EIA

We co-ordinated the preparation and submission of a planning application and Environmental Impact Assessment for a major new facility for the production of bio-ethanol from grain for use as a vehicle fuel with an associated CHP plant.

The plant, which was the first of its type in the UK to secure planning permission is designed to produce up to 110,000 tonnes of bio-ethanol per annum, also producing bottled CO₂ for use in the soft drinks market and wet and dry animal feed, as sustainable co-products of the process.

The site is located in an ecologically sensitive Area of Special Landscape and detailed planning permission was successfully obtained.





Barton Renewable Energy Plant

Generating electricity for 37,000 homes

CLIENT

Peel Energy

LPA

Trafford Borough Council

STATUS

Planning permission granted

SERVICES

Planning, EIA, Expert Witness
(including participation in
Judicial Review process)

We were appointed to project manage the preparation and submission of a planning application for a new biomass renewable energy plant adjacent to the Manchester Ship Canal in Trafford.

Our role involved the provision of initial planning strategy advice and we subsequently coordinated preparation of planning application and EIA and led consultation with a number of stakeholders.

Whilst the planning application was refused against the advice of council officers, permission was granted following a Public Inquiry to which we presented expert witness services with respect to Planning and EIA. This included responding to the public perception of health impacts.

We subsequently provided evidence to the Court in response to a third party application for Judicial Review which was unsuccessful.



Other technologies

Long Mountain

Hydrogen production compound for Long Mountain Wind Farm site

CLIENT

Energia Renewables

LPA

Causeway Coast and Glens Borough Council

STATUS

Planning permission granted

SERVICES

Planning, Strategic Communications

The proposed hydrogen production compound was a pilot proposal for North Ireland and formed part of an EU Funded research project in to the generation of alternative energy fuels from renewable energy.

Our role involved leading pre-application discussions with the local authority and other key stakeholders including the local community.

We also prepared and co-ordinated the planning application including management of a technical team addressing a broad range of environmental matters including noise, air quality, drainage, traffic and landscape impact.

Following submission of the application we monitored its progress and liaised with the local authority's planning and environmental team in the negotiation noise conditions.

Haigh Hall Farm, Solar Array, Leeds

Generating solar energy in Yorkshire

CLIENT

Stephen Butterfield

LPA

Leeds City Council

STATUS

Approved

SERVICES

Planning

In 2013 we secured planning permission for the north of England's first, large-scale solar farm (7.2MW)

The 14 ha site was located within the Green Belt and a 'Special Landscape Area'.

Our role include liaison with Officers and Members of the City Council and local community We worked closely with the LPA to provide officers, planning committee members and members of the public with sufficient information to be able to understand how the solar farm will work.



Energy Generation Plant, Tata Steel, Port Talbot

Implementing infrastructure of national significance

CLIENT

Tata Steel Ltd

LPA

Neath Port Talbot County Borough Council

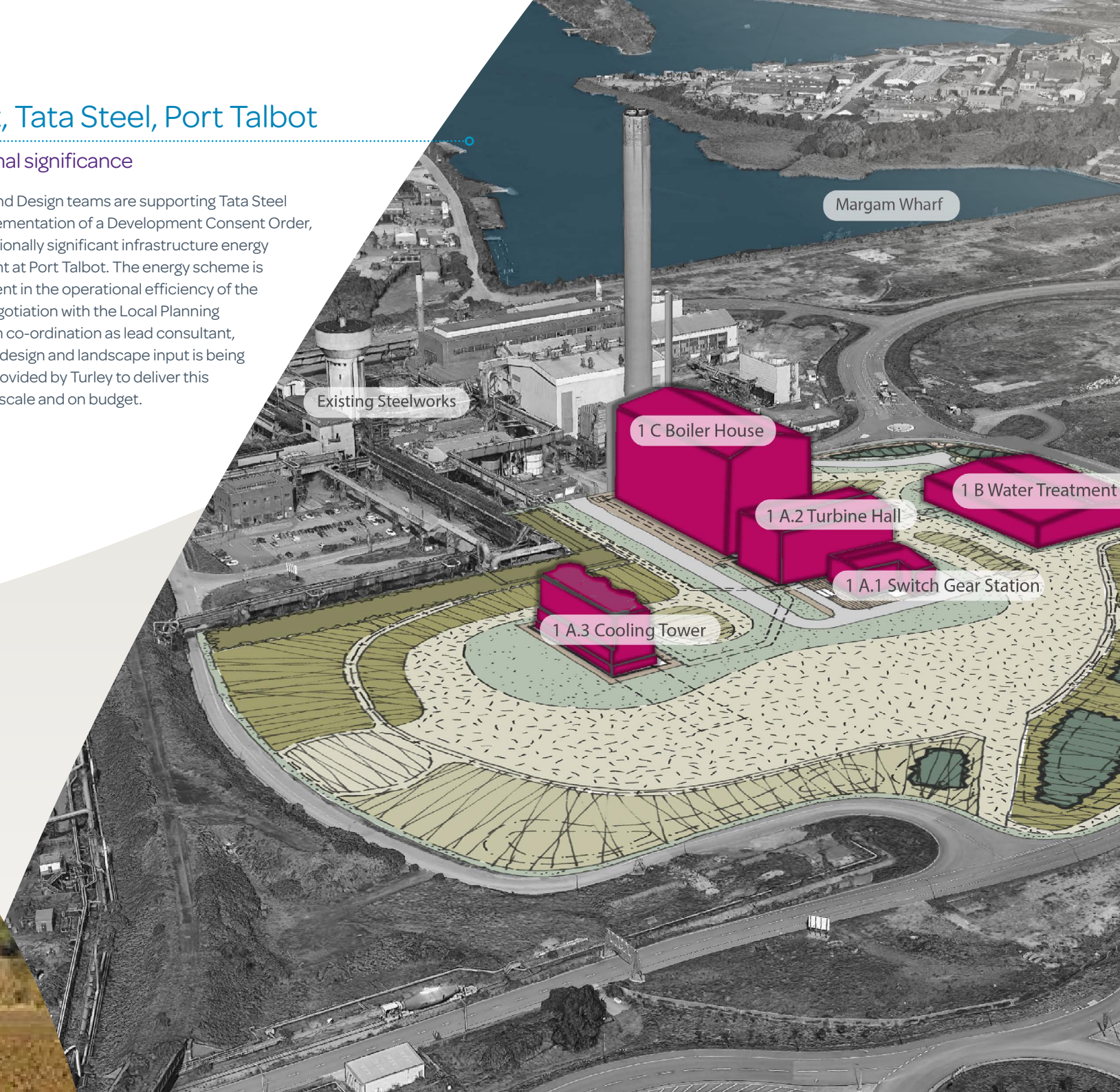
STATUS

Staged implementation of a Development Consent Order (30 Dec 2015), being a gas fuelled electricity generating station with a nominal gross electrical capacity of up to 150 megawatts

SERVICES

Planning, Design

Our Planning and Design teams are supporting Tata Steel Ltd in the implementation of a Development Consent Order, delivering a nationally significant infrastructure energy generation plant at Port Talbot. The energy scheme is a vital investment in the operational efficiency of the steelworks. Negotiation with the Local Planning Authority, team co-ordination as lead consultant, and significant design and landscape input is being successfully provided by Turley to deliver this project to timescale and on budget.







Project Dragon - Phoenix Wharf

Planning, project management and Environmental Impact Assessment for a new alcohol to jet fuel production facility

CLIENT

LanzaTech UK Ltd

LPA

Neath Port Talbot County
Borough Council

STATUS

Planning application
submitted

SERVICES

Planning, Strategic
Communications, EIA,
Landscape and VIA,
Economics, Sustainability
and ESG

The team is working closely with officers at Neath Port Talbot County Borough Council and Natural Resources Wales. The Pre-Application Consultation (PAC) follows a period of early consultation on the plans which was held in May and June 2023. We are leading on Planning, Project Management and Environmental Impact Assessment for LanzaTech.

The facility, which would be located at Crown Wharf in Port Talbot, would produce about 100 million litres of sustainable aviation fuel per year, around 10% of the sustainable aviation fuel that the UK plans to use by 2030. Sustainable aviation fuel reduces the production of greenhouse gases by more than 70%. This is expected to create over 150 full-time jobs, including 85 jobs on-site alongside further employment in the supply chain.

The c.£350 million project is being delivered in conjunction with the South Wales Industrial Cluster.

The project will deliver a strategic investment in a new alcohol-to-jet fuel production facility in Port Talbot.

A planning application was submitted in November 2023.

Our team experience

As set out previously, our team in Wales has experience and expertise in the delivery of major complex projects, which span across a wide range of sectors. Our experienced team also has a detailed understanding of the various consenting regimes.

Each team is led by a Director with over 10-years of general experience and specific track-record in successfully promoting energy infrastructure projects. They would be supported by more junior resource, selected for their experience specifically within the energy-sector or other complex projects.

We also have a dedicated and specialist UK and Ireland-wide team who provide assistance across the UK and Ireland for energy projects. Should a project call for the skills, experience or relationships of a particular team member we would work flexibly to ensure that the best team is made available and the best advice is delivered at all times.

This approach ensures that we take advantage of our unrivalled local knowledge, experience and strong relationships with Senior Officers at local authority level, but also drawing on our presence throughout the UK and Ireland.

Meet the team



Rob Peters

Senior Director
rob.peters@turley.co.uk



Huw Jones

Director, Head of South West
and Wales
huw.jones@turley.co.uk



Owen Francis

Director, Head of Planning
Wales
owen.francis@turley.co.uk



Gareth Barton

Director
gareth.barton@turley.co.uk



Barny Evans

Director, Sustainability
and ESG
barny.evans@turley.co.uk



Chris Pickup

Associate Director,
Economics
chris.pickup@turley.co.uk



Andrea Kellegher

Director, Strategic
Communications
andrea.kellegher@turley.co.uk



Abi Roberts

Associate Director
abi.roberts@turley.co.uk



Rhianon Jones

Senior Planner
rhianon.jones@turley.co.uk



Ffion Middleton

Planner
ffion.middleton@turley.co.uk



Mared Jones

Planner
mared.jones@turley.co.uk



Jadine Berry

Director
jadine.berry@turley.co.uk



Emily Bell

Associate Director
Strategic Communications
emily.bell@turley.co.uk



Mykena Mortimer-Davies

Senior Planner
mykena.mortimer-davie@turley.co.uk

Belfast
Birmingham
Bristol
Cambridge
Cardiff
Derry~Londonderry
Dublin
Edinburgh
Glasgow
Leeds
London
Manchester
Nottingham
Reading
Southampton

turley.co.uk

 [@turleyplanning](https://twitter.com/turleyplanning)

 [linkedin.com/company/turley](https://www.linkedin.com/company/turley)

Turley