

# Carbon Capture Facility, Protos, Cheshire

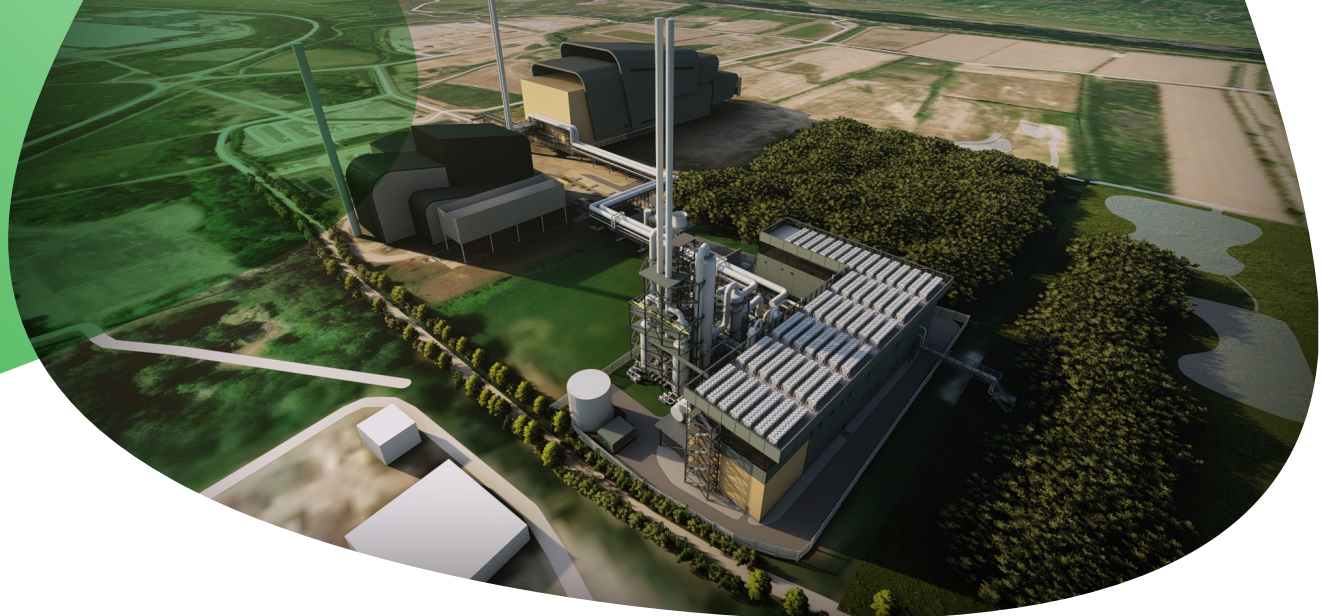


Image courtesy of Weedon Architects

## First-of-its-kind sustainable project

### CLIENT

Biffa Waste Services /  
Encyclis Limited

### LPA

Cheshire West and Chester  
Council

### STATUS

Pre-application

### SERVICES

EIA, Heritage, Sustainability  
and ESG, Landscape &  
VIA, Economics, Strategic  
Communications

### Our role

- On behalf of a joint venture between Encyclis Limited and Biffa Waste Services Limited, we are supporting the development of a Carbon Capture Facility associated to the Protos energy from waste facility.
- We are commissioned to co-ordinate a multi-disciplinary team in the preparation of the planning application and EIA including drainage, biodiversity, landscape and visual impact, climate change, noise and air quality. A bespoke consenting strategy has been prepared ensuring alignment between the planning and EIA workstreams.

### Results

- The project has been identified by UK Government as one of eight industrial carbon capture projects to proceed to the due diligence stage of the Track 1 (Phase 2) Cluster Sequencing Process and will export captured carbon to the HyNet carbon capture, transportation and storage project.
- The project will be one of the first-of- its-kind to work through the Town and Country Planning Act process.

**Turley**